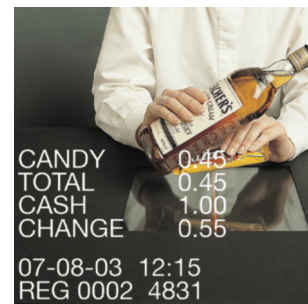




EPOS FRAUD DETECTION

- MONITORS CASH REGISTER DATA
- PRODUCES A SEARCHABLE DATABASE OF EXCEPTIONS
- NETWORKABLE - IMAGES CAN BE REVIEWED BY PC, & REMOTLY WITH AN INTERNET CONNECTION, FROM ANYWHERE IN THE WORLD
- REDUCES PILFERING FROM CASH REGISTERS



REVIEW RECORDED TILL IMAGES AND CAPTURED DATA FROM ANYWHERE IN THE WORLD!



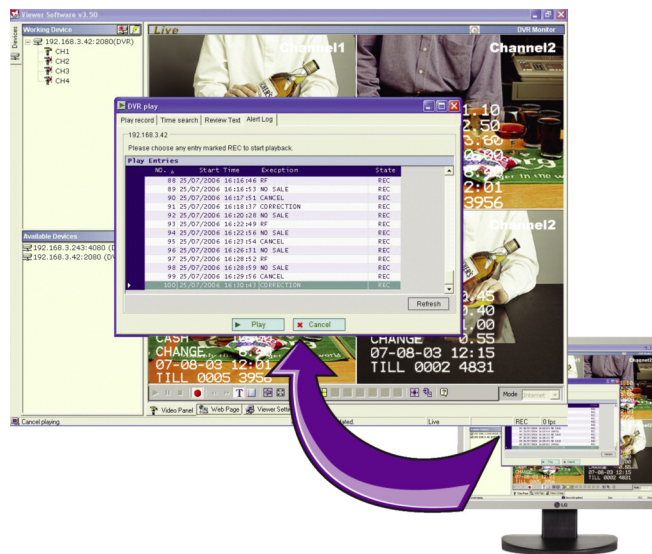
SNAP SHOT OF CASHTRACK POS MENU

- POS software allows:
- ✓ Remote search and viewing of suspicious events
 - ✓ Easier access of recorded data
 - ✓ Greater number of programmable exceptions
 - ✓ Covert operation made easier

CASHTRACK - COMPATIBLE WITH OVER 400 CASH REGISTERS

CashTrack from AVE is a DVR with in-built EPOS software. When used with the VSI-PRO the CashTrack system overlays serial data onto a CCTV image; typically from a cash register, but can be used for many other devices, such as weigh bridges, speed cameras, ATMs, Cash counting devices, etc.

The data overlaid is permanently embedded onto the images, and therefore cannot be tampered with. The combination of cash register Data and CCTV images makes it easy to identify suspicious transactions.



Features

- Non PC based stable digital recorder with major digital advantages
 - Pre-Alarm recording capability
 - Network capability
- Triplex DVR allowing video recording while viewing live video
- Four channel, Quad or single disply Modes
- Recoding Media
 - Built-in internal hard disk
 - Critical image archiving via built-in CD and SD Card
- Compression - MJPEG
- Multiple search modes
 - Time search
 - Alarm search
 - Event search
 - CD and SD card search
 - POS/EPOS Data search (with optional Cashtrack Software)
 - Filter(thumbnail) list search
- Water marking with digital signature
- Cashtrack software
 - for POS/EPOS data storage, Search and playback
- Operation status record log
- Power interrupt recovery
- Multiple recording modes
 - Schedule recording
 - Alarm recording: (Pre-Alarm recording and Post-Alarm recording)
 - Manual recording
 - Circular recording
- Playback Speeds
 - Frame stepping
 - 1/16X, 1/8X, 1/4X, 1/2X, 1X, 2X, 4X, 8X, 16X, 30X, 100X
- Network Ready
 - View live or recorded images
 - Archive image as JPEG and AVI
 - Ethernet 10/100 Base-T (TCP/IP, DHCP, HTTP, SMTP)
- User friendly Jog / Shuttle operation
- Control multi brand PTZ camera's though network



HOW DOES IT WORK !

SUITABLE APPLICATIONS:

- Cash registers (over 400 models)
- ATM - cash points
- Weigh bridges
- Cash Counters

Video images from the CCTV system goes into the VSI-PRO. The camera selected typically watches the general cash register area, including the register, counter, employee and customer.

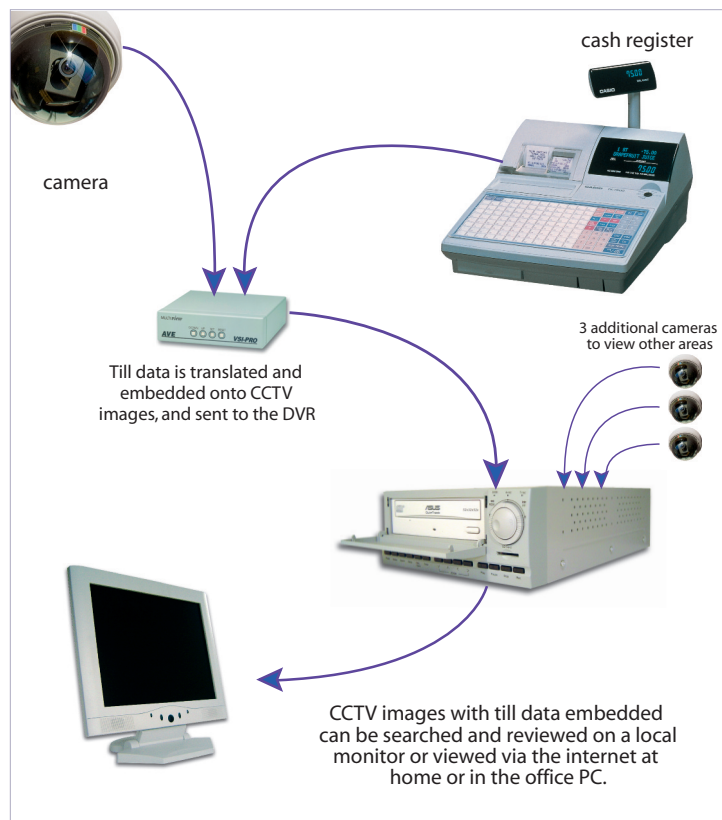
Transaction data from the cash register goes to the VSI-PRO, where it is filtered and translated into viewable 'receipt' type text.

The VSI-PRO then overlays the till data onto the CCTV images and embeds it permanently, so it cannot be tampered.

These new images are sent to the recorder for storage.

Images stored on the Recorder can then be analysed and searched by user, alarms exceptions, voids or any other parameters set up by the user.

This is a basic system, but multi-cash register systems can also be accommodated with the use of an AVE CashTrack DVR and AVE Network which can handle numerous cash registers at the same time.



Detailed Specification

Resolution	NTSC 720x480 Pixels PAL 720x576 Pixels	On Screen display	Title (10 Char.) / Time and Date
Cashtrack	4 x (E)POS/ATM via VSI/REGCOM network	Playback Speeds	Frame Stepping, 1/16, 1/8, 1/4, 1/2, 1, 2, 4, 8, 16, 30 and 100 times normal speed
Video Input	Compersite Video in (BNC) x 4	Playback via	Alarm / Time / Event list / Filter (Thumbnail) / SD card
Video Output	Compersite Video out (BNC) x 1 Looping Out (BNC) x 4	Language	English / Chinese(T)
Audio In/Out	Line in / out (RCAx2), 16bits 8kHz	Set-up Menu	Multi-layer / Network setting
Compression	MJPEG	Log List	2048 Records
Storage Media	160 - 750GB / 1 x Fixed HDD	Alarm In/Out	4 Alarm Input / 1 x Alarm Output
Archive	Built-in CD and SD	Comms ports	RS-232, RS 485, and RJ45
Water mark	Digital Signature	Network interface	Ethernet (RJ45 10/100 base-Tx) x 1
Recording Rate	NTSC 30 ips (720x480) PAL 25 ips (720x576)	Network Protocol	TCP/IP, DGCP, HTTP, UDP, FTP, PPP
Image Compres.	Best (40KB) / High (32KB) Standard (21KB) / Basic (16KB)	Network Capabilities	Archive Image as JPEG View Live or Recorded images Vai Memory Card (SD) or RS-232
Recording Mode	Schedule / Manual / Alarm / Circular	Software Upgrade	Operation . Menu Setup / Remote access
Alarm Record	Event / Pre-Alarm / Post Alarm	Pass. Protection	Input 100-230V, 50/60 Hz / Output DC12V
Pre-Alarm Record	50 Pictures (20 PPS for 5 seconds)	Power Supply	220 x 89 x 320 mm EIA 19" 2U Half Size
Built in buzzer	Yes	Dimensions	5 - 40 °C (41 - 104 °F)
Motion Detection	Yes	Operating Temp.	FCC/A, CE
		Regulation	

AVE (UK)
Endeavour House,
Coopers End Road,
Stansted,
Essex, CM24 1SJ

Tel: +44 (0)845 600 9323
Fax: +44 (0)845 600 9363
Email: avesales@ave-uk.com
Web: www.ave-uk.com

AVE (Europe)
123 Millennium Business Park
Ballycoolin
Dublin 11
Rep. Of Ireland

Tel: +353 (1) 8647450
Fax: +353 (1)8647451
Email: avesales@ave-europe.eu
Web: www.ave-europe.eu

AVE (USA)
2501 Central Parkway, Suite C1
Houston,
Texas TX 77092

Tel: 281-443-2300
Fax: 281-443-8915
Email: sales@aveusa.com
Web: www.aveusa.com